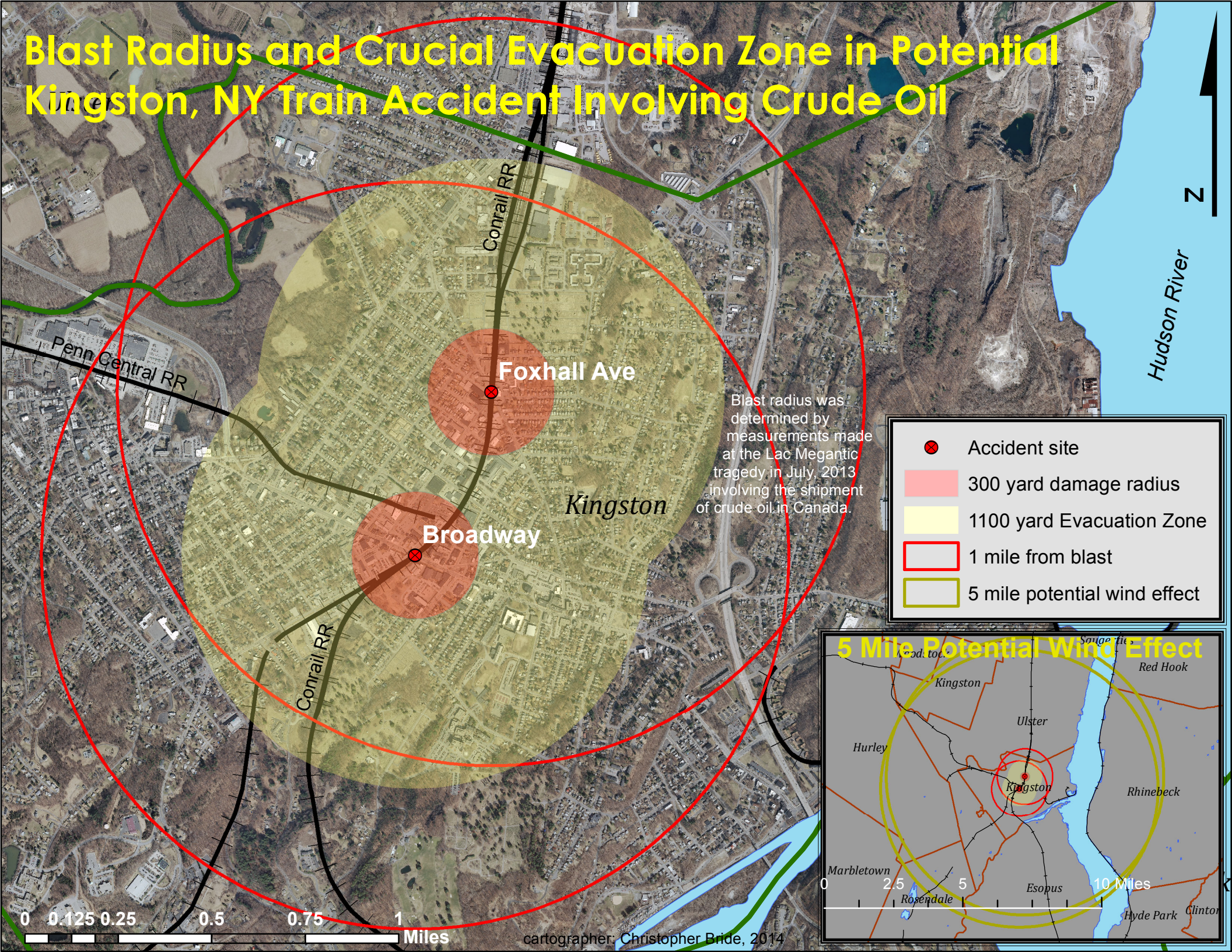
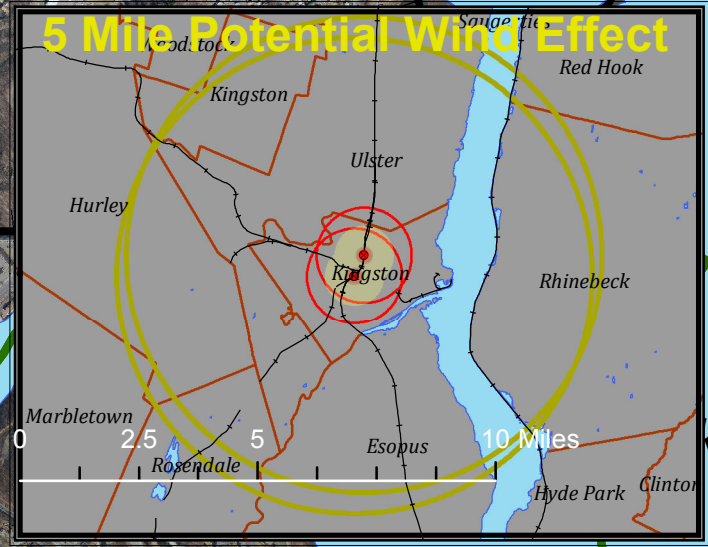


Blast Radius and Crucial Evacuation Zone in Potential Kingston, NY Train Accident Involving Crude Oil



Blast radius was determined by measurements made at the Lac Megantic tragedy in July, 2013 involving the shipment of crude oil in Canada.

- ⊗ Accident site
- 300 yard damage radius
- 1100 yard Evacuation Zone
- 1 mile from blast
- 5 mile potential wind effect



0 0.125 0.25 0.5 0.75 1 Miles

cartographer: Christopher Bride, 2014