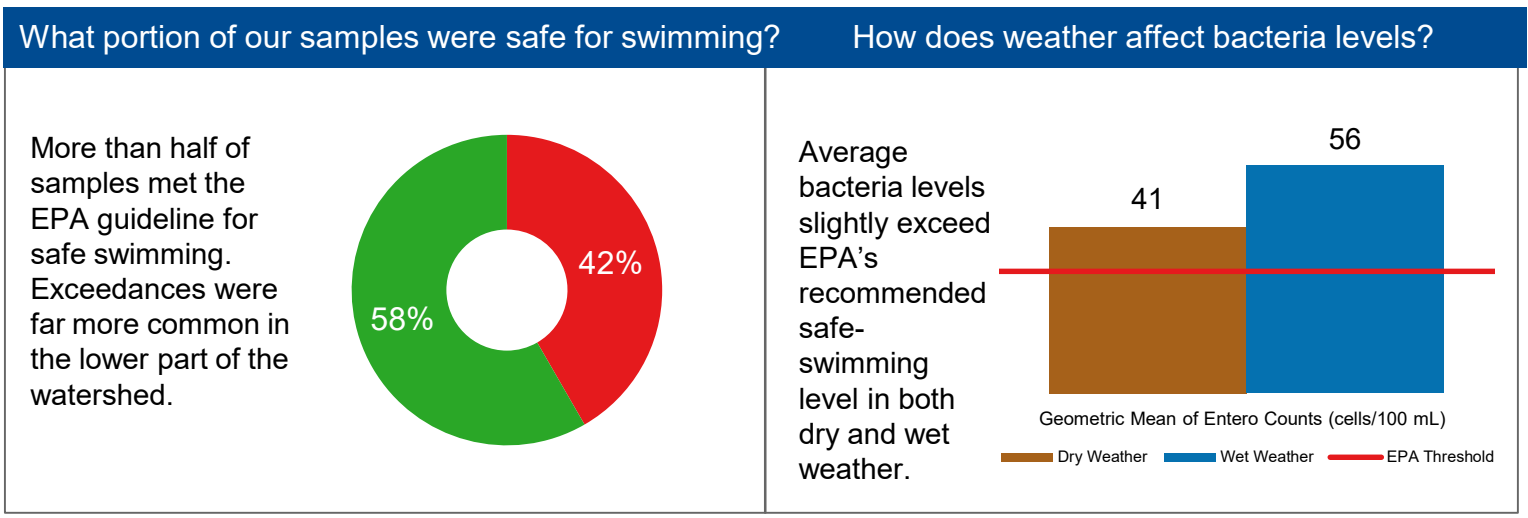
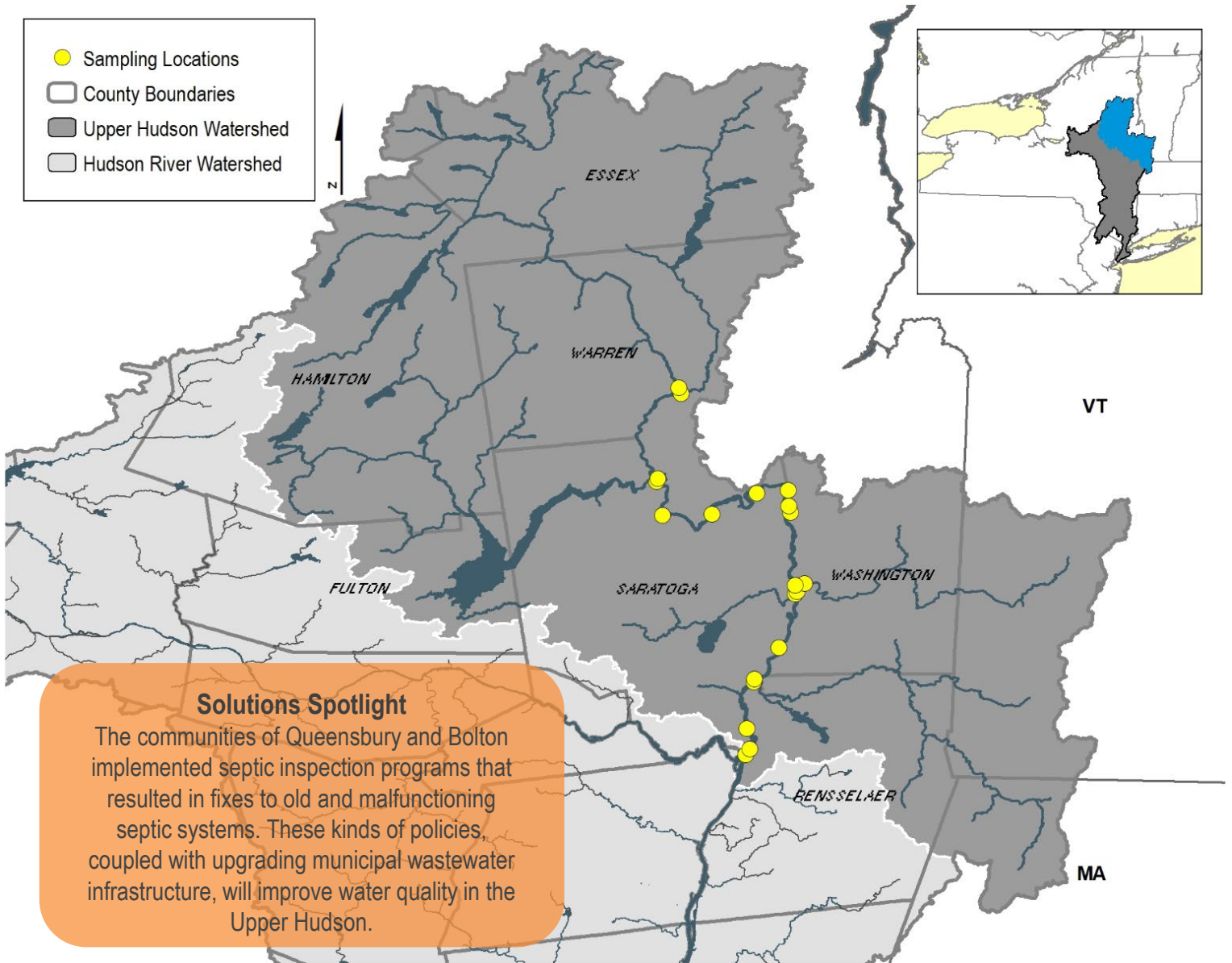


# UPPER HUDSON RIVER

Community Water Quality Monitoring Results

2016-2021



**More:** Explore a watershed map, data from each sampling site, and more at [www.riverkeeper.org/water-quality/citizen-data/upper-hudson-river](http://www.riverkeeper.org/water-quality/citizen-data/upper-hudson-river)

## Community Science

The water quality data presented here are based on an analysis of 720 samples collected by watershed residents and staff of Jarrett Engineers. Samples were collected in June, August & October of 2016, and from May to October in 2017-2020, and processed by Riverkeeper. To get involved, contact Sebastian Pillitteri at [spillitteri@riverkeeper.org](mailto:spillitteri@riverkeeper.org).

### Why We Measure Bacteria

Fecal indicator bacteria such as *Enterococcus* (“Enterococcus”) usually do not make us sick. But because they live in the guts of warm-blooded animals, when these bacteria are present in water, pathogens that can make us sick may also be present.

Sources of fecal bacteria may include sewer overflows and failures, inade-

quate sewage treatment, urban or farm runoff, septic system failures, wildlife and contaminated sediment.

While research continues, the EPA has set thresholds to define if water is safe for swimming based on decades of science relying on measurements of these bacteria. Data are shown in Enterococcus cells per 100 mL.

## About the Upper Hudson River

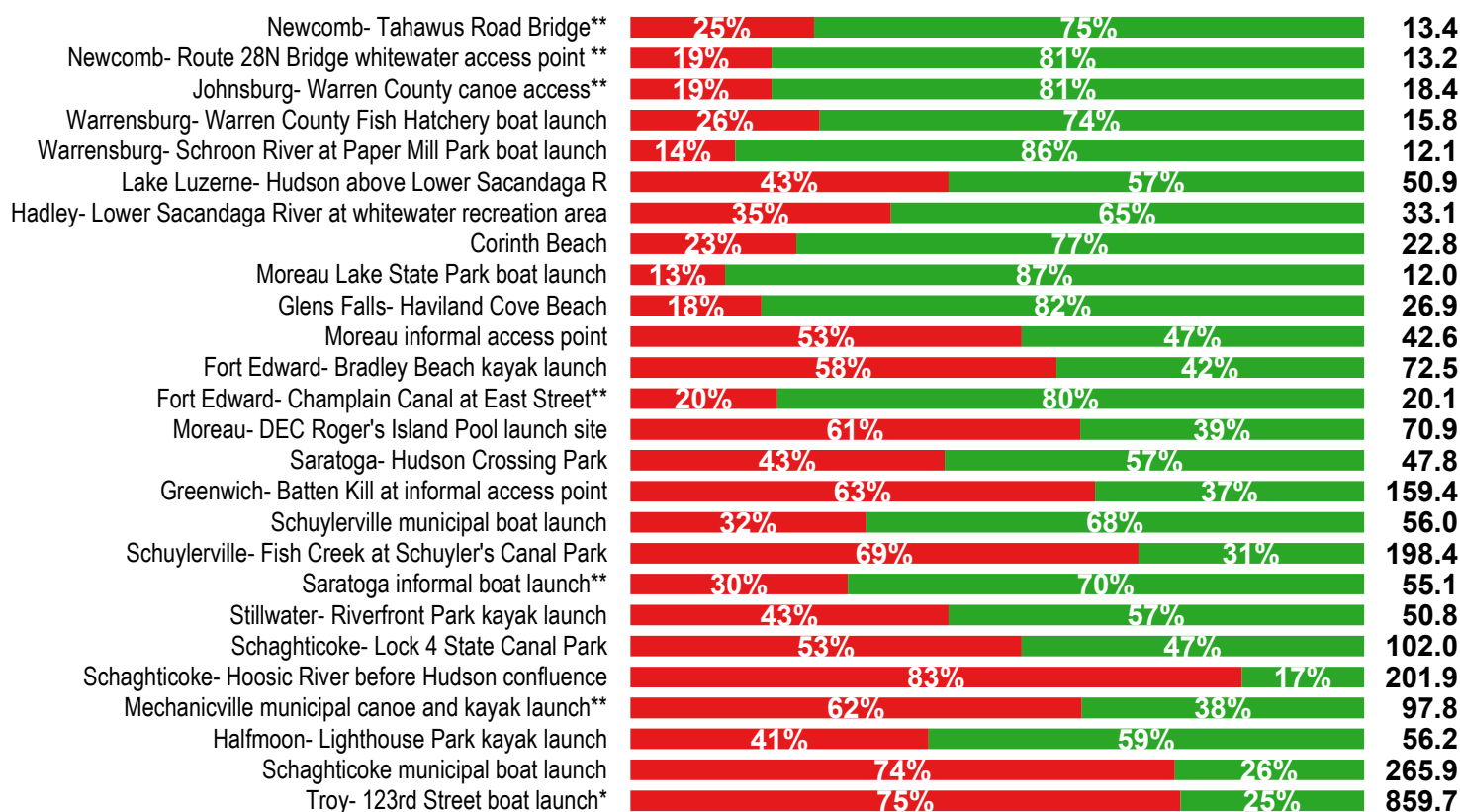
The Hudson River begins at Lake Tear of the Clouds, on New York’s highest peak, Mount Marcy. The “upper” part of the river is the portion above of the Federal Dam at Troy, which forms a barrier to the tides. More than 83,000 people use the Upper Hudson as a drinking water source.

### Signs of Progress

As part of a growing community science program, the Media Sanctuary NATURE Lab Water Justice Fellows are processing samples for the Upper Hudson. This is part of a summer program that explores water justice with local youth in Troy, at the confluence of the Upper and Hudson Rivers.

What portion of samples at each site were acceptable for swimming? EPA threshold: single sample should not exceed 60

How high were bacterial levels? EPA threshold: geometric mean\* should not exceed 30



■ % of Samples Unacceptable    ■ % of Samples Acceptable

\*Sampling at this site began in 2021. \*\*Site not sampled in 2020.